

SCHAEFER

S10

GT

pininfarina



SCHAEFER

Symarine

660

770

SCHAEFER



SCHAEFER
YACHTS

W10

GT



SCHAEFER

510





SCHAEFER

510 GT

PROLUSC





SCHAEFER

















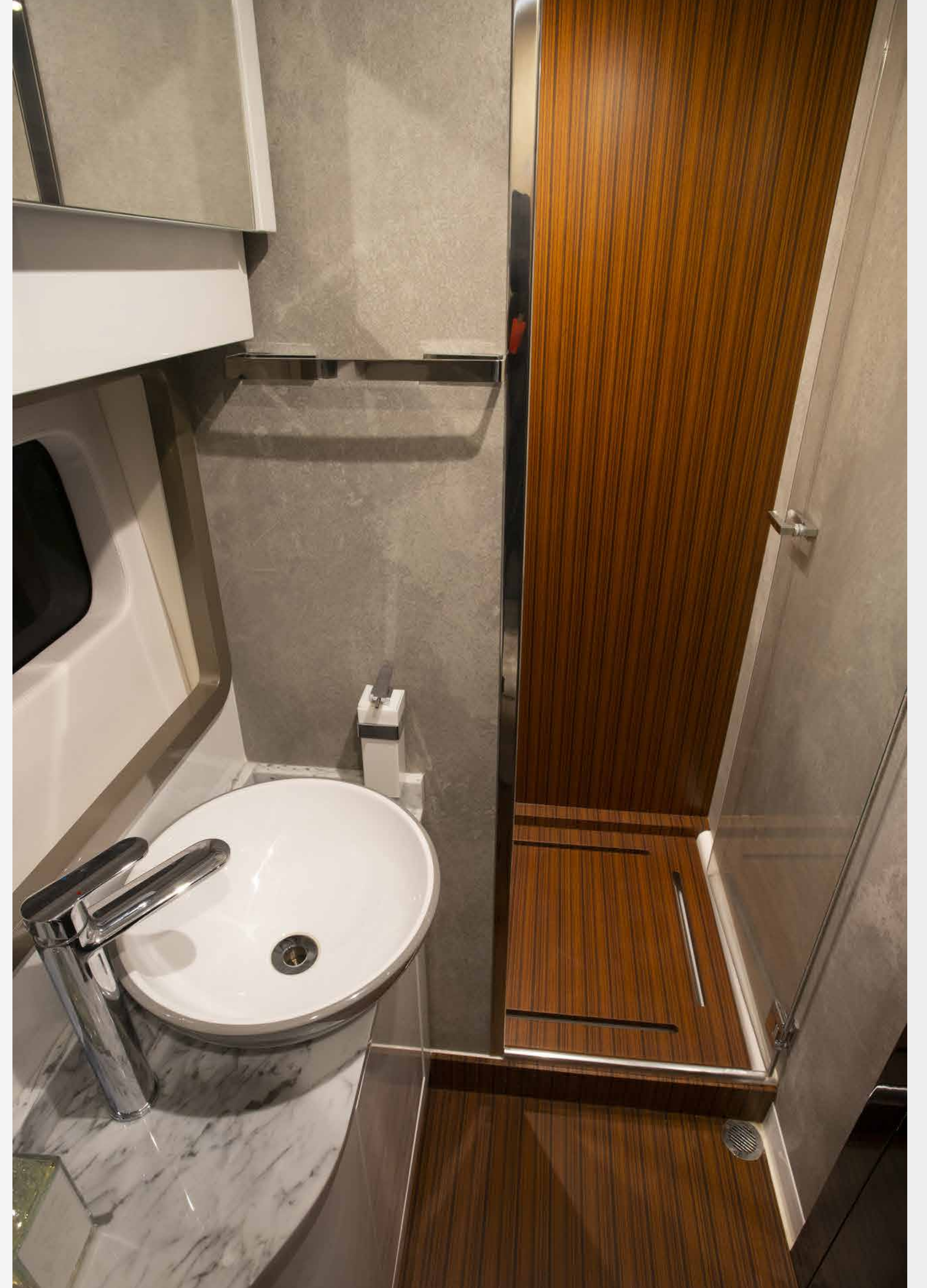




Dior
Jas Gawronski

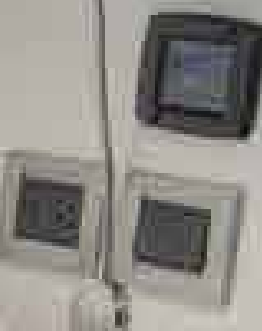


Dior

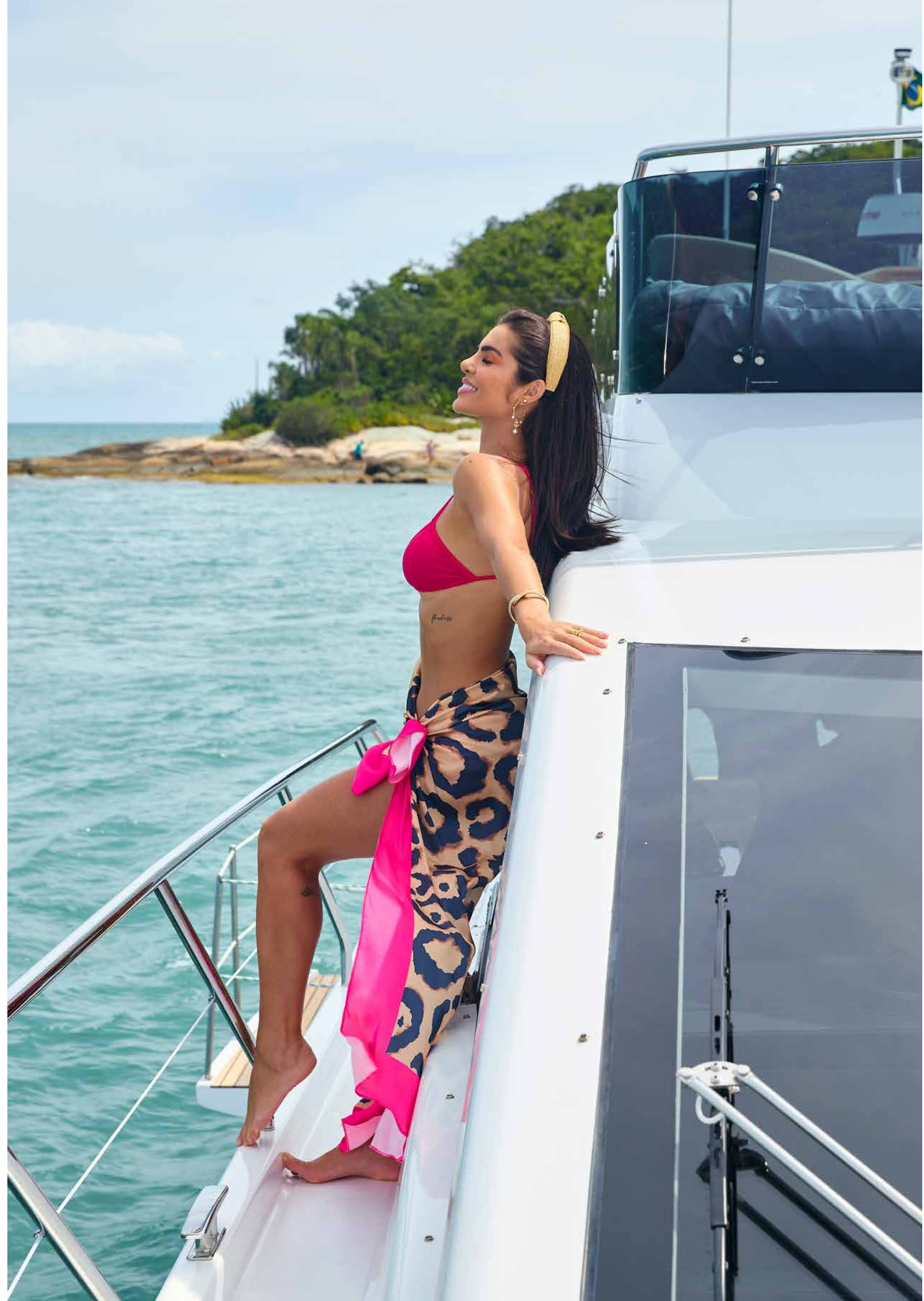




coffee break









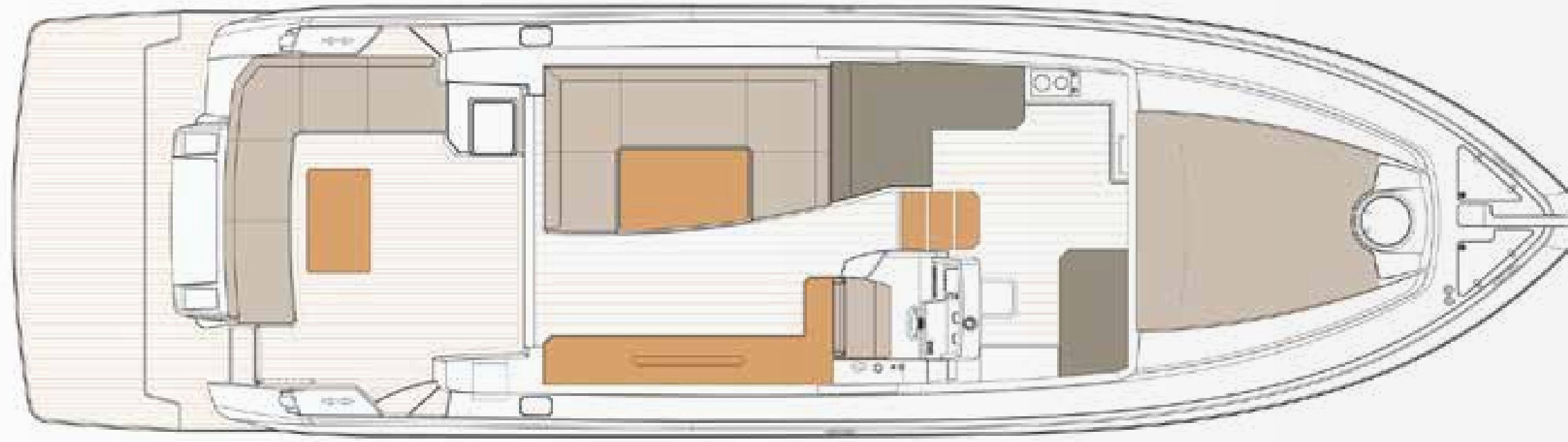




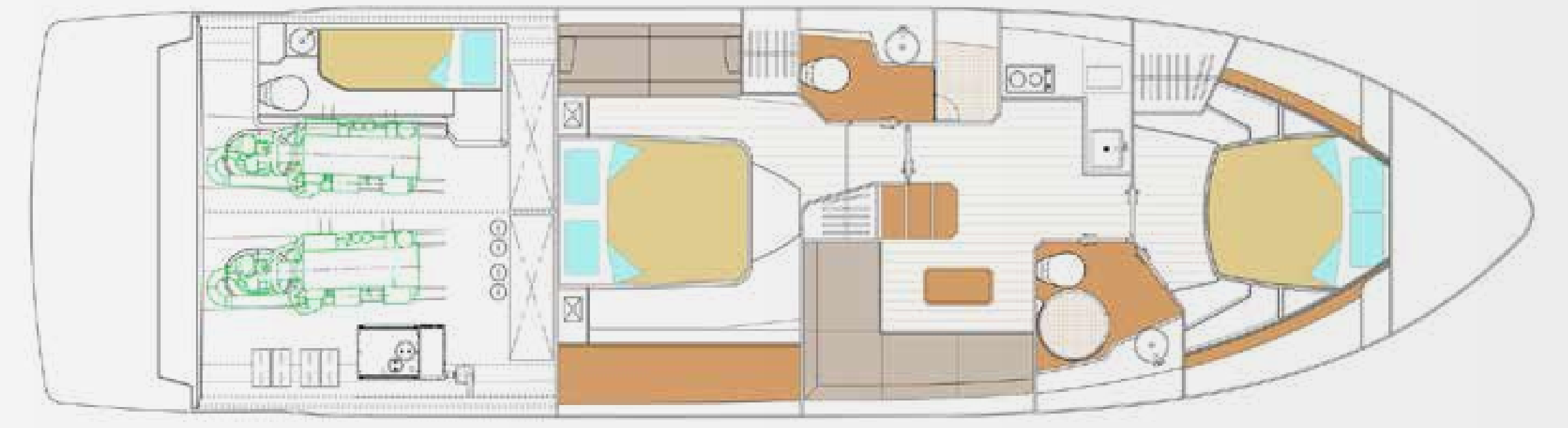


IMG



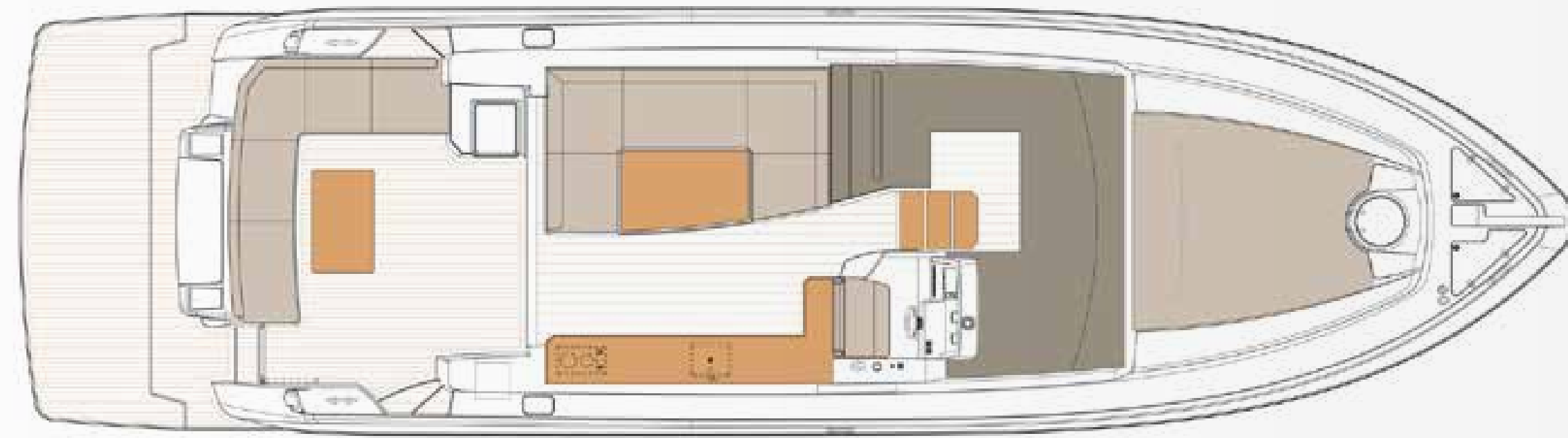


MAIN DECK - OPTION 1

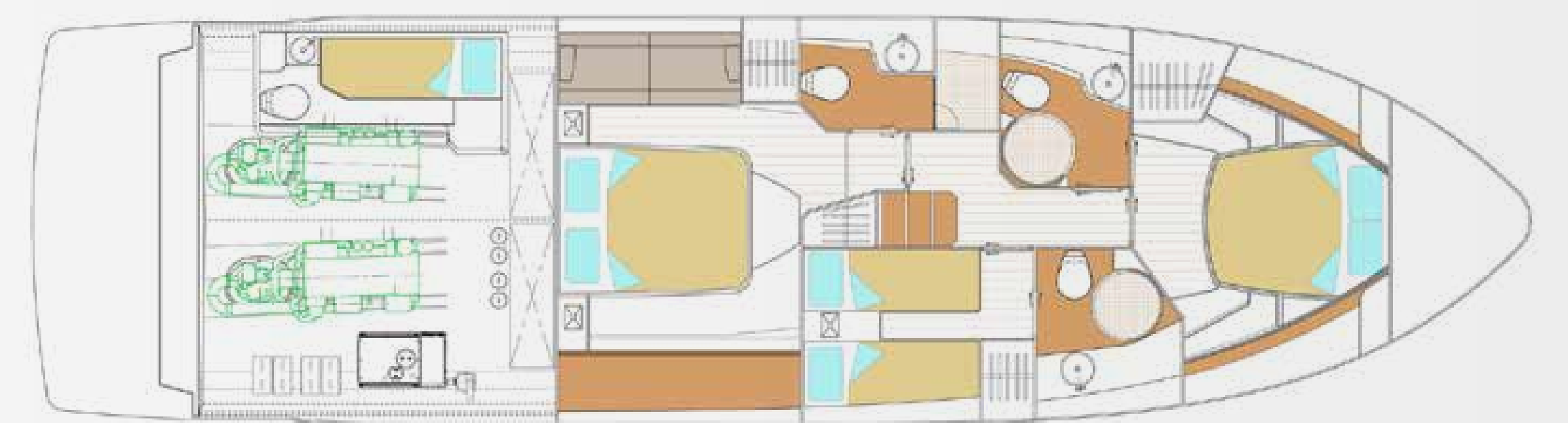


CABINS - OPTION 1

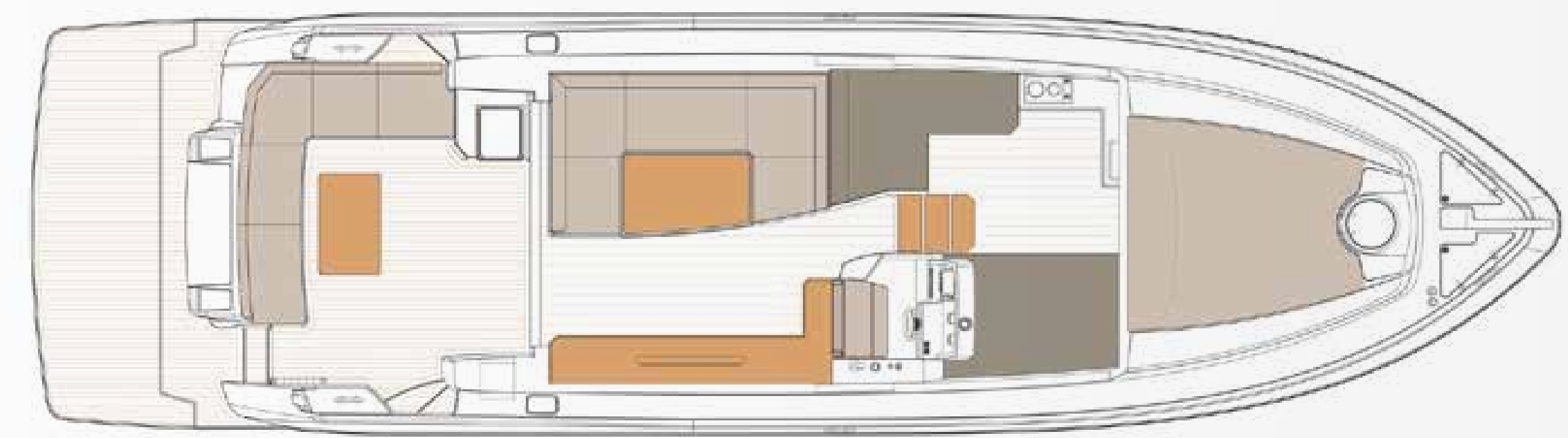
SCHAEFER
510
GT
pininfarina



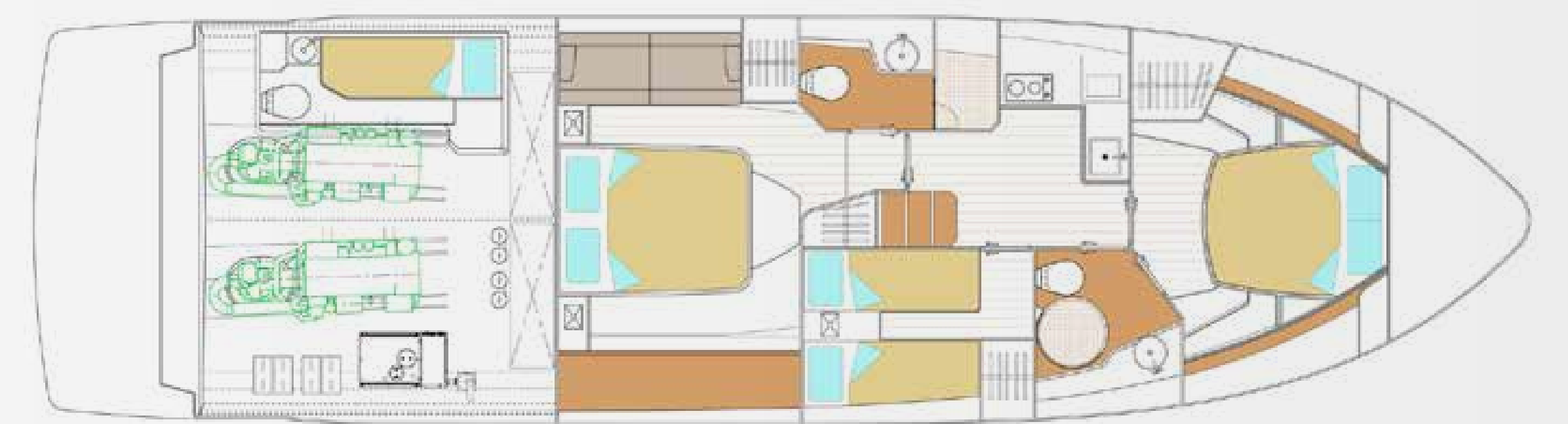
MAIN DECK - OPTION 2



CABINS - OPTION 2



MAIN DECK - OPTION 3



CABINS - OPTION 3



Max. length (including pulpit and platform): 15.82 m (51.9')

Max. beam (including guardrails): 4.36 m (14.3")

Max. Draft: 1.26 m (4.1 ft)

Light craft mass: 18,300 kg (40,344 lbs)

Deadrise angle: 17°

Fresh water capacity: 470 L (124 Gal)

Fuel capacity: 1300 L (343 Gal)

Installed gensets: 1 x 11.5 kW

Clearance: 5.18 m (17')

Passenger capacity (day): 16

Passenger capacity(night): 6+1

Designer: Pininfarina / Marcio Schaefer





V33 - 303 - 365 - 375 - 400 - 510
FLY - 400 - 510 - 600 - 660 - 770 - 25M

schaeferyachts.com

